

GRADALL[®]
A JLG COMPANY

G9-43A

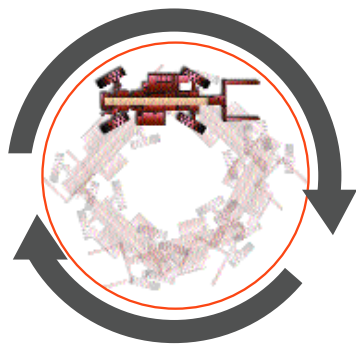
MATERIAL HANDLERS



- 9,000 lb (4082 kg) Capacity
- 43 ft (13.1 m) Lift Height
- Rough Terrain Mobility
- All-Wheel Steering



KING CRAB™



EXTRA LIFT HEIGHT, EXTRA CAPACITY WITH ALL-WHEEL STEERING EFFICIENCY

The Model G9-43A by JLG and Gradall delivers the extra lift height and lift capacity needed on demanding jobs. Delivering excellent productivity on a wide range of jobs, the Model G9-43A can efficiently lift, move and place up to 9,000 pounds (4082 kg) of materials including lumber, blocks and trusses.

The Model G9-43A also benefits from Gradall's strength and durability, ready to deliver a full day's work when you need it to meet aggressive productivity schedules.

- The all-wheel steering system permits the machine to maneuver on tight jobsites. Select from front-wheel, four-wheel or crab steering - the machine easily adapts to jobsite requirements and operator preferences.
- Loads can be placed with accuracy at heights up to 43 feet (13.1 m), thanks to a rugged boom with three overlapping sections designed to minimize boom deflection. The boom is also located so that it does not obstruct the operator's view during load transit.
- Select from a wide range of attachments to expand the versatility of the Model G9-43A. For example, the maximum lift height can be increased with a handy 6-foot (1.8 m) vertical mast, or you can place loads in tight spots with a variety of swing carriages.
- The Model G9-43A features the G Series operator compartment, favored for its spacious design and no-nonsense approach to operator efficiency. Easy-to-read gauges help operators monitor machine functions, and a joystick that can control every boom movement. The cab also has SAE/ISO FOPS/ROPS certified protection for the operator.
- Fulltime four-wheel-drive provides mobility in mud, sand or on hard surfaces. The long wheelbase and low center of gravity enhance the machine's stability, and a low profile allows the machine to move through doorways or under overhead obstructions. Sway control also helps keep loads level on uneven surfaces.

Choose the steering you want and need

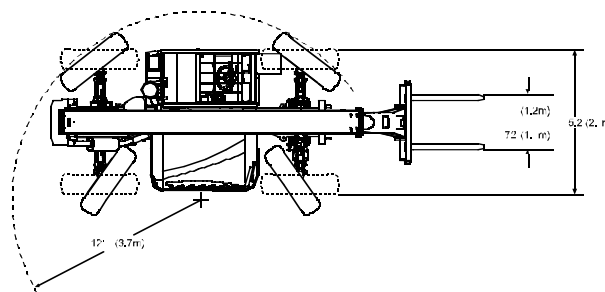
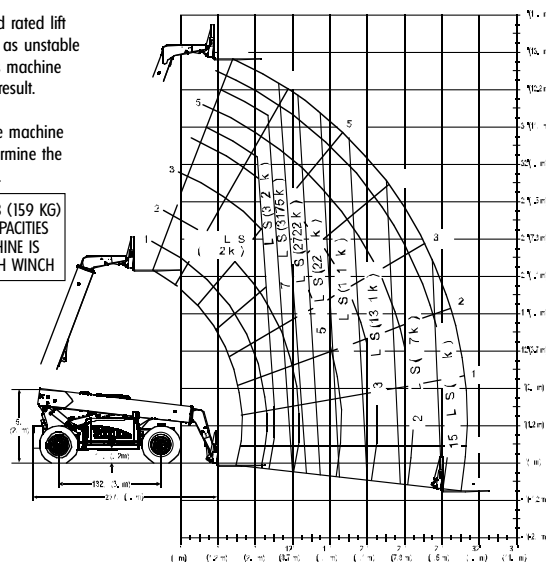
Cab-mounted controls let the operator choose all-wheel steering, front-wheel steering or four-wheel crab steering. The choices can match the machine's steering system to the challenges of the jobsite, moving down narrow aisles, around sharp corners or through congested work areas. Plus, the system accommodates operators' individual preferences.



DO NOT exceed rated lift capacity loads, as unstable and dangerous machine conditions will result.

DO NOT tip the machine forward to determine the allowable load.

DEDUCT 350 LB (159 KG) FROM ALL CAPACITIES WHEN MACHINE IS EQUIPPED WITH WINCH



IMPORTANT

Rated lift capacities shown are with machine equipped with carriage and pallet forks. The machine must be level on a firm surface with undamaged, properly inflated tires. Machine specifications and stability are based on rated lift capacities at specific boom angles and boom lengths. [If specifications are critical, the proposed application should be discussed with your dealer.]



G9

PERFORMANCE SPECIFICATIONS

Rated Capacity at 24 in. (610 mm) load center9,000 lb. (4,082 kg)	Wheelbase132.0 in. (3.4 m)
Maximum Lift Height43 ft. (13.1 m)	Outside Turning Radius.....12 ft. (3.7 m)
Maximum Reach30.5 ft. (9.3 m)	Powershift Transmission4-Speed FWD3-Speed REV
Maximum Capacity at Maximum Lift Height7,000 lb. (3,175 kg)	Frame Leveling10 degrees
Maximum Capacity at Maximum Reach1,500 lb. (680 kg)	Maximum Travel Speed19.5 mph (31.4 km/hr)
Height95.5 in. (2.4 m)	Operating Weight without Carriage and Forks25,200 lb. (11,431 kg)
Width.....95.3 in. (2.4 m)	



Engine placed for functional access

The unique frame design locates the John Deere engine in the center of the machine, providing a nearly ideal left-right weight distribution. This provides ease of access to locations for routine service.



The wrap-around dashboard in the operator cab is designed for convenient operator visibility. The comfortable seating module is fully adjustable, designed to increase comfort and reduce fatigue.

OPTIONAL ACCESSORIES

AUXILIARY HYDRAULIC CIRCUIT

Required for all attachments equipped with cylinders or other hydraulic components. Consists of valves, left hand controls and hydraulic lines.

CAB ENCLOSURE

Lockable, split door; heater; defroster fan; washer and wind shield wiper.

LIGHT GROUP

COLD WEATHER START PACKAGE

RADIAL TIRES

TILT ON JOYSTICK

- Rough Terrain
- All-Wheel Steering
- 9,000 lb (4,082 kg) Capacity
- 43 ft (13.1 m) Lift Height

43A

G9-43A

MATERIAL HANDLERS



QUICK-SWITCH® ATTACHMENTS

A full range of attachments can increase the return on your equipment investment, and allow you to take full advantage of the Model G9-43A's designed-in versatility. The G Series Quick-Switch boom-end design allows just one operator to change attachments in a matter of seconds.

OPTIONAL ATTACHMENTS

TILT CARRIAGE 48" (1.2 m)

TILT CARRIAGE 72" (1.8 m)

***SLOPE PILE CARRIAGE** .. 48" (1.2 m) & 72" (1.8 m)

***DRYWALL CARRIAGE** 72" (1.8 m)

***100° SWING CARRIAGE** 72" (1.8 m)

PALLET FORKS

2" x 4" x 48" (50.8 mm x 101.6 mm x 1.2m)

CUBING FORKS

2" x 2" x 48" (50.8 mm x 50.8 mm x 1.2m)

***BOOM HEAD MOUNTED WINCH**

***VERTICAL MAST** 6' (1.8 m) QUICK-SWITCH

***SWING MAST** 6' (1.8 m)

TRUSS BOOM 10' (3.0 m) and 15' (4.6 m)

BUCKET 0.75 CY (0.57 m³)

BUCKET 1.25 CY (0.95 m³)

BUCKET 102" wide-1.25 CY (0.95 m³)

***TRUSS BOOM**

WITH WINCH 10' (3.0 m) and 15' (4.6 m)

PERSONNEL WORK PLATFORM

***Requires auxiliary hydraulics**

Use only Gradall approved attachments with proper material handler model/attachment load capacity charts displayed in the operator's cab. OSHA requires all rough terrain forklift operators be trained according to OSHA 29 CFR 1910.178 (1).

GRADALL
A JLG COMPANY

The Gradall Company • 600 East Chestnut Street
Orville, Ohio 44667
(330) 339-2211/Fax: (330) 684-1029

DRIVE LINE SPECIFICATIONS

ENGINE

Make and Model John Deere 4045TF150	Displacement 276 cu. in. (4.5 L)
Fuel No. 2 Diesel	Rated Speed 2500 rpm
Cycles 4	Max. Gross BHP 99 HP (74 kW)
No. of Cylinders 4	Fuel Tank 38 gal (141 L)

ENGINE FILTERS

Two-stage dry air cleaner – centrifugal pre-cleaner with continuous dust ejector and replaceable dry filter element.

Visual service indicator.

Replaceable element-type fuel filter/water separator.

Full-flow replaceable-element engine oil filter.

ELECTRICAL SYSTEM

Voltage – 12V Alternator – 63 amp Battery – 810 Cold Cranking AMP at 0°F

TRANSMISSION

Dana VDT-12000 powershift with torque converter.

Neutral start switch (park brake must also be engaged to start).

Full time 4-wheel drive.

Directional and gear change control on single steering column mounted lever.

AXLES

Trunnion mounted planetary 55° steer axles.

Integral steer cylinder.

High bias limited slip differential on front axle.

SERVICE BRAKES

Inboard wet disc brakes on front and rear axles.

PARKING BRAKES

Wet disc spring-applied hydraulic release on front axle.

Light on dash indicates when brake is on.

TIRES

Standard: 13:00x24 – 12PR, G2 type.

Optional: 13:00R24 radial tires, 15.5-25 12PR L2.

STEERING 4-WHEEL

Power steering with manual backup.

Operator selectable 4-wheel circle, 4-wheel crab, 2-wheel front.

INSTRUMENTS

Volt meter, hour meter, engine oil pressure gauge, fuel gauge, water temperature gauge.

All gauges protected by clear acrylic covers.

CONTROLS

Grouped for operator comfort and convenience.

Boom lift and crowd on single joystick.

Right-hand tilt and sway lever.

Foot throttle.

HYDRAULIC SYSTEM-IMPLEMENT

Tandem gear pump.

40 gal (151.4 L) system capacity.

8 micron filters with visual service indicator and suction strainer.

Lift, crowd, tilt and sway cylinders have holding valves intended to prevent

dropping of load in the event of hose failure.

This machine is designed to meet specifications of ASME B56.6b-1998 for rough terrain forklift trucks. It is Gradall Policy to continually improve its products. Therefore, designs, materials and specifications are subject to change without notice and without incurring any liability on units already sold. Units pictured are equipped with optional equipment. See applicable specifications and price lists for optional equipment.